

Tillamook Headlight Herald



WEDNESDAY, DECEMBER 24, 2014

TILLAMOOK, OREGON • WWW.TILLAMOOKHEADLIGHTHERALD.COM

VOL. 125, NO. 52 • \$1.00

Wednesday, December 24, 2014

Page A12

www.tillamookheadlightherald.com

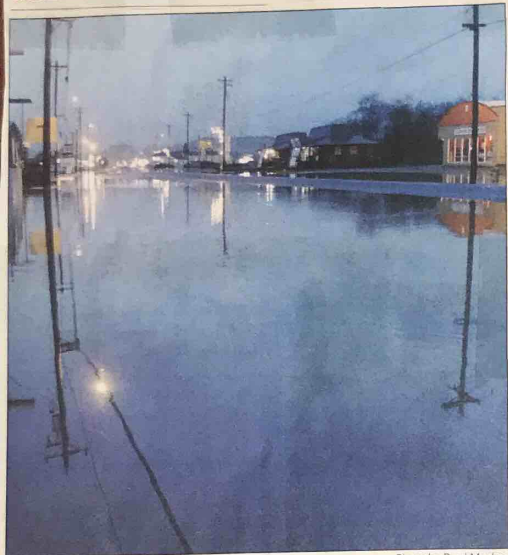


Photo by Brad Mosher



Photo by Chelsea Yarnell

Highway 101 in Tillamook was closed between Rosenberg's and the Fern Restaurant for the majority of the day on Sunday.

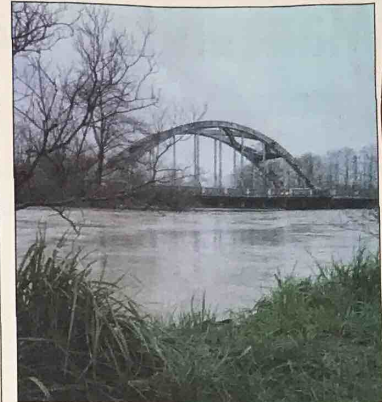


Photo by Kat Essary

The Wilson River overflows beneath the Highway 101 bridge in Tillamook near Bay Breeze Golf Course.

Tillamook flood alert

Tillamook County was under flood alert from Dec. 19-22 causing several road closures. We asked Headlight Herald readers to submit their photos from around the county.

For more photos, see **FLOODING**, Page A12



Photo by Chelsea Yarnell

Right: The Nestucca River as seen in Cloverdale from the Dory Restaurant.

Photo by Amy Gallant



Photo by Jessica Pastega

Above: The view from the Blue Heron French Cheese Company's driveway in Tillamook.



Left: Water floods Alderbrook Road on Sunday.

Photo by Sarah Miller