

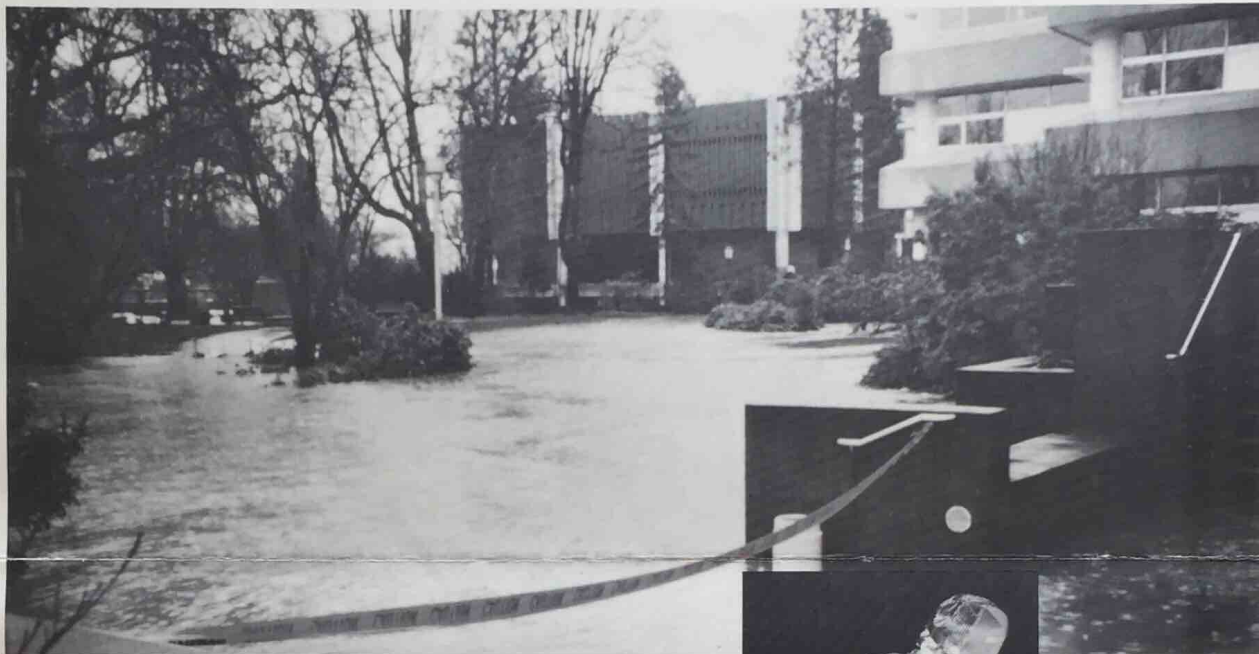
The Agriculture QUARTERLY

ISSUE 321

THE OREGON DEPARTMENT OF AGRICULTURE

Spring 1996

Special Edition: Flood '96



The flood waters enveloped the department building and Capitol Mall area.

HOW TO CONTACT THE DEPARTMENT

1 All prior **phone** numbers have been reestablished at the new location. If you reach a number that does not connect, call the general information number at 503-986-4550.

2 **Visit** the department building at 3420 Cherry Avenue in north Salem off the Parkway (see map inside). Labs are at other locations (see page 3).

3 Continue to address all **mail** to the department at the old address:
OR Dept. of Agriculture
635 Capitol Street NE
Salem OR 97310-0110

4 For express mail, courier, or other **deliveries**, use:
OR Dept. of Agriculture
3420 Cherry Avenue NE
Salem OR 97303

See page 3 for lab locations.

The Oregon Department of Agriculture is still open for business—and in fact, never shut down services—despite the flood imposed damage of the administrative headquarters building on Capitol Street in Salem. The office building may take up to two years to repair before the department can reuse the facility.

The flood waters of the mid-February rains brought the swelling Mill Creek over its banks, deluging surrounding roads and homes, and rushing into the department's basement.

Despite efforts to sandbag around the perimeter, the water level was too high to keep back. When it raced down the stairwells and loading dock area, the impact was so great it broke windows, smashed walls, bent aluminum studs, and overturned desks and equipment.

"It looked like a bomb went off in here," said Bruce Andrews, director of the department.



Director Bruce Andrews readies to assess damage in the building.

Andrews and many other department employees donned chest waders, miner's hats, and gloves to reenter the building's basement as soon as the water level had receded enough from its high mark at 10 feet.

The building controls were all

located in the basement—electrical wiring, telephone equipment controls, heating/cooling system, computer network wiring—all destroyed.

"Despite the loss of the administrative function of our building, our employees didn't lose a day of work and they continued to serve our customers throughout this event," says Andrews.

Department staff worked countless hours, much on their own time, to salvage what items could be taken from the basement.

**The Agriculture Quarterly
Spring 1996
Issue 321**

The Agriculture Quarterly (ISSN 0897-7143) is published quarterly and distributed free of charge by the Oregon Department of Agriculture, 635 Capitol St. NE, Salem, OR 97310-0110. Second-class postage is paid at Salem, OR.

POSTMASTER: Send address changes to:
The Agriculture Quarterly
635 Capitol St. NE
Salem, OR 97310-0110

Director: Bruce Andrews

Director of Communications:
Bruce Pokarney

Editor & Publications Manager:
Brent Searle
(503) 986-4558
e-mail: bsearle@oda.state.or.us

Distribution, reproduction, or story ideas from the content of this publication are encouraged. Please give credit to the publication as the source. Check with the editor if you have questions. In compliance with the Americans with Disabilities Act this publication will be made available in alternate formats upon request.

State Board of Agriculture

Chair
Rod Park
Represents the nursery industry

Vice-Chair
Karla Chambers
Represents the wheat and vegetable industries

Eric Lindauer
Represents consumer interests

Dave Doerfler
Represents the seed industry

Reid Saito
Represents row crops

Margaret Magruder
Represents the sheep industry

Tom Straughan
Represents Soil & Water Conservation Districts

David Timm
Represents the dairy industry

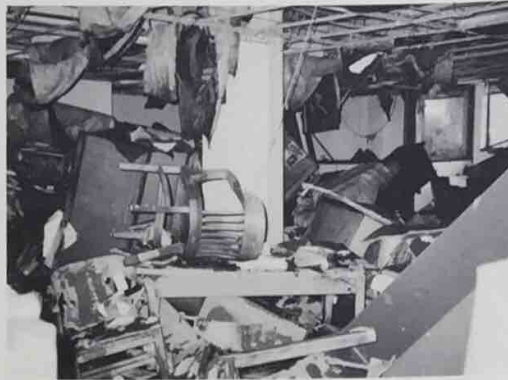
Dalton Straus
Represents the cattle industry

Dewey Rand
Represents consumer interests

Thayne Dutton (ex-officio)
Dean of Agriculture
Oregon State University

Board members can be contacted through the Department of Agriculture at 635 Capitol Street NE Salem OR 97310 (503) 986-4551 TDD (503) 986-4762

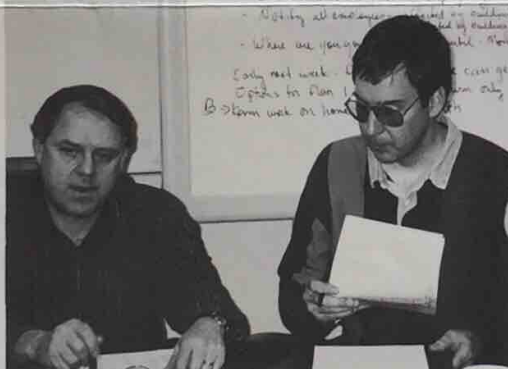
The Agriculture Quarterly is printed on recycled paper.



The basement level of the building looked like a bomb had exploded. Piles of furniture and equipment were strewn everywhere.



Department staff worked countless hours in the days after the flood to salvage equipment, records, files, and other items.



An agency disaster team met immediately following the flood to plan how to keep department operations going.



Forty-five large dumpsters were required to haul away the damaged remains of the building, totaling over 2.2 million pounds of garbage material.

Thirty years of brand records—over 13,000 files—were under water for more than 48 hours. When the water level was low enough, employees pulled the files outside and began going through them, taking out the brand record from each individual file and placing it between two sheets of wax paper. The papers were taken to a freezer facility to preserve and dry.

Because of the contaminated water which deluged the materials, everything had to be handled with gloves.

“These employees deserve a medal of honor for work that certainly is far above and beyond the call of duty,” says Andrews. “They evidenced a true commitment to serving their state and constituents that has to be commended.”

The department divisions were located in a variety of locations in the days immediately following the flood. Trailers were set up at a site on Hawthorne Avenue and the Plant Division, Measurement Standards Division, Animal Health and ID Division, and Natural Resources Divisions moved staff to that location. The Purchasing Division also set up shop at that site.

The Business Office temporarily relocated to the Revenue Building and the administrative offices were set up in the Department of Veterans' Affairs.

“These other agencies were very helpful to us in a difficult situation,” says Andrews. “And our computer staff and business office worked with these agencies to have phones reestablished and computer systems up and running within a few days.”

“We recognize that agriculture producers had some of the most significant losses from this event, and that is where we want to focus our efforts despite the displacement our staff has suffered,” emphasized Andrews.

Because of the recent events, ODA has had to juggle three balls at once: Provide referral assistance to flood-stricken farmers, carry out its normal day-to-day programs and services, and deal with its own displacement due to the flood. It has been a challenge, but the agency has tackled all three responsibilities as best as possible.

Heading into spring, the department was proceeding with regularly scheduled plans including a new Motor Fuel Quality Assurance Program (Measurement Standards Division), a proposed gypsy moth eradication project in Gresham (Plant Division), and continued involvement in the multi-agency Coastal Salmon Restoration Initiative (Natural Resources Division).

Flood Recovery Assistance for Agriculture

Several efforts are being made to assist agricultural producers who were affected by the flood.

Equipment and Supplies: The Capital Press newspaper is publishing a weekly listing of equipment and supplies needed by flood victims and of donations available to those affected by the flood. Those needing assistance may phone, mail or fax the information to the Capital Press with name, town, phone number and list of equipment or supplies needed. Phone (800-882-6789). If you mail or fax, the request, please put Flood Help List on the envelope or heading (503-370-4383 fax). If you prefer not to have your name published in the paper, the Capital Press will forward your name to the Oregon Farm Bureau to coordinate the assistance. For donations, use the same phone/fax number. If arrangements are needed to transport equipment or supplies, include that information. Mailing address: Capital Press, Flood Help List, P.O. Box 2048, Salem OR 97308-2048.

Dairies: Special assistance for dairies in Tillamook is being coordinated through the Oregon Dairy Farmers Association and area dairy farmers. Anyone interested in donating feed, fencing, dairy animals, money, or other resources to dairy families should contact Cora Lautenbach at (503) 399-1520. The Tillamook County Flood Relief Center is also coordinating flood donations (503) 842-4480. Dave Cutz, of McDonald Ag Corp. in McMinnville is coordinating pasture seed donations. He can be reached at (503) 472-5158 or FAX (503) 472-5150.

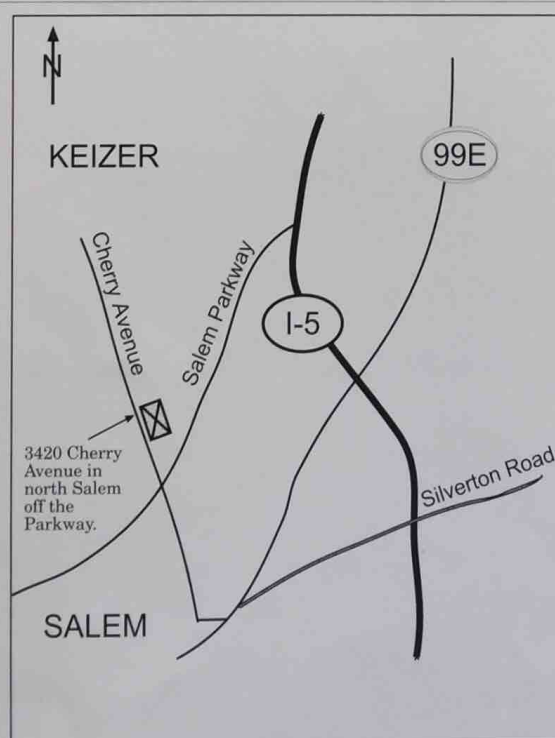
Livestock and Crop Damage: (Physical and prevented planting losses) The U.S. Department of Agriculture Farm Service Agency (FSA) may be able to provide a variety of emergency assistance programs to farmers. The agency can furnish CCC-owned grains to eligible livestock producers at reduced prices, and cost-share livestock feed purchases. To help rehabilitate farmland damaged by a natural disaster, the FSA can assist farmers with cost-sharing to carry out emergency conservation practices under the Emergency Conservation Program (funding for this assistance is pending in Congress). FSA may also be able to provide low-interest loans to qualifying producers.

County FSA offices are the primary points of contact for participation in programs and are listed in telephone directories under "U.S. Department of Agriculture."

For information on commodity sales and purchases, contact:
USDA FSA Kansas City Commodity Office
P.O. Box 419205
Kansas City, MO 64141
Telephone: (816) 926-6364

Damaged Dikes, Levies and Irrigation Systems: In most instances, the USDA Natural Resource Conservation Service (Former SCS) will be the lead agency to provide assistance in instances of broken or damaged dikes, levies, and irrigation systems. Contact your local NRCS office for more information.

Other: The Oregon Department of Agriculture provides mediation services for private party disputes and adverse decisions issued by the U.S. Department of Agriculture. If you have a conflict situation resulting from the flood—including debt repayment difficulties, contract disputes, property issues, or other problems—contact the Oregon Farm Mediation Program to discuss how mediation might be helpful. Brent Searle, Mediation Program Coordinator, 503-986-4558.



New Facilities Temporarily House ODA

The location of most department divisions for the next 18 months to 2 years will be at the former State Farm Training Facility in north Salem off the Salem Parkway on Cherry Avenue.

If you are traveling south on I-5, take the Salem Parkway exit and continue about 1.5 miles to Cherry Avenue. If you are traveling north on I-5, take the Keizer/Chemewa Road exit (#260), turn left and cross over I-5; turn left again at the next light. The right lane will take you onto the Salem Parkway; continue to Cherry Avenue.

Most prior phone numbers (986 prefix) are now operational at the new locations. If you experience any trouble reaching someone at the department, call the main information line at (503) 986-4550. **Use the department's prior mailing address for all correspondence (635 Capitol Street, NE, Salem OR 97310).** For deliveries, see front panel on How to Contact the Department, or see below for lab locations.

The department's **Lab Services Division** will be located at Park Five, 200 Hawthorne Avenue SE, Suite A-130, Salem, 97301. The 986-prefix phone numbers will be functional for the lab at this location. Call (503) 986-4565 for general information at the lab.

The **Animal Health Lab** will be located at the OSU Vet School for now. Address: OSU Vet School, Magruder Hall, Corvallis OR 97331. Phone: 541-737-6960.

The **Metrology Lab** will continue to be located just north of the intersection at State street and Hawthorne Avenue; 151 Hawthorne NE, Salem OR 97301. Phone: (503) 378-6898.



Tillamook was probably the hardest hit area for agriculture. More than 590 dairy cows were lost and hundreds of acres of pastures are under silt.

Flood Damage Assessment to Agriculture

Agriculture sustained over \$37 million in losses from the flood, including the following:

- \$19 million in crop losses on 28,000 acres
- \$3.4 million in livestock lost
- \$10.6 million in damage to 781 farm residences
- \$3.4 million in equipment lost or damaged to 735 units

Total losses due to flooding on all property and damage in Oregon, including roadways and bridges, is estimated at \$300 million.

Other highlights:

- 26 Oregon rivers exceeded flood stage
- 22,000 displaced Oregonians in 27 counties
- 10,000 Oregonians applied for disaster assistance

Flood Recovery Stream Clean-up

The remains of February's flood left many farms and nearby streams in a mess. While reclaiming farm land is a primary concern for producers, efforts to clean up streams might be best left alone for a while. According to fish experts, gravel, boulders and natural woody debris deposited by high waters have improved fish habitat in some areas. If not well thought out, some actions taken now to repair damaged stream areas may adversely affect fish habitat and fish passage for years to come. Before you begin clean up efforts to repair waterways, consider the following:

- Leave large woody debris in streams if it poses no threat to structures, navigation, or safety. The debris creates pools and hiding places for fish and keeps spawning gravel from washing away.
- Avoid using bulldozers in streams or removing dirt from banks. Look at all options of supporting stream banks before taking actions.
- Before replacing culverts, think about ways fish passage can be improved.
- Some fish species are currently spawning, hatching or rearing in many streams. If possible, delay in-stream work until later in the spring.

Contact your local Soil & Water Conservation District for more details.

Publications Notice:

Most of the department's publications were destroyed in the flooding of the building. Some will be reprinted, and notice will be provided of their availability.

1994-95 Oregon Agriculture and Fisheries Statistics— 84 pages of facts and figures about agriculture production in Oregon. Contact the Oregon Agricultural Statistics Service, 1220 SW 3rd Ave., Room 1735, Portland OR 97204, (503) 326-2131. Department stock was ruined in the flood.

Oregon Farmers Handbook: A Guide to State & Federal Regulatory Compliance Requirements—Out of stock until reprinted.

Agribusiness Finance Guide: Credit and Export Assistance for Food Processors and Value-added

Agribusiness—A comprehensive collection of information about potential funding opportunities for value-added food processing industries in Oregon. Contact the Information Office, (503) 986-4550, or the Agricultural Marketing and Development Division (ADMD), (503) 229-6734, for a copy. No cost.

Food Processors Handbook—Intended to provide food and seafood processors with a basic understanding of applicable rules, business responsibilities, and marketing options. Contact ADMD, (503) 229-6734, or the Information Office, (503) 986-4550, for a copy. No cost.

Farm Labor Posters—out of stock until reprinted.

ODA's home page on the world wide web is at <http://www.oda.state.or.us/oda.html>

Oregon Department of Agriculture
635 Capitol St. NE
Salem, OR 97310-0110

Calendar of Events

June 13-14, 1996

Board of Agriculture, Quarterly Meeting

Location: Eastern Oregon State College, La Grande

Contact: Lois Shafer, 503/986-4550



Oregon
Department
of Agriculture